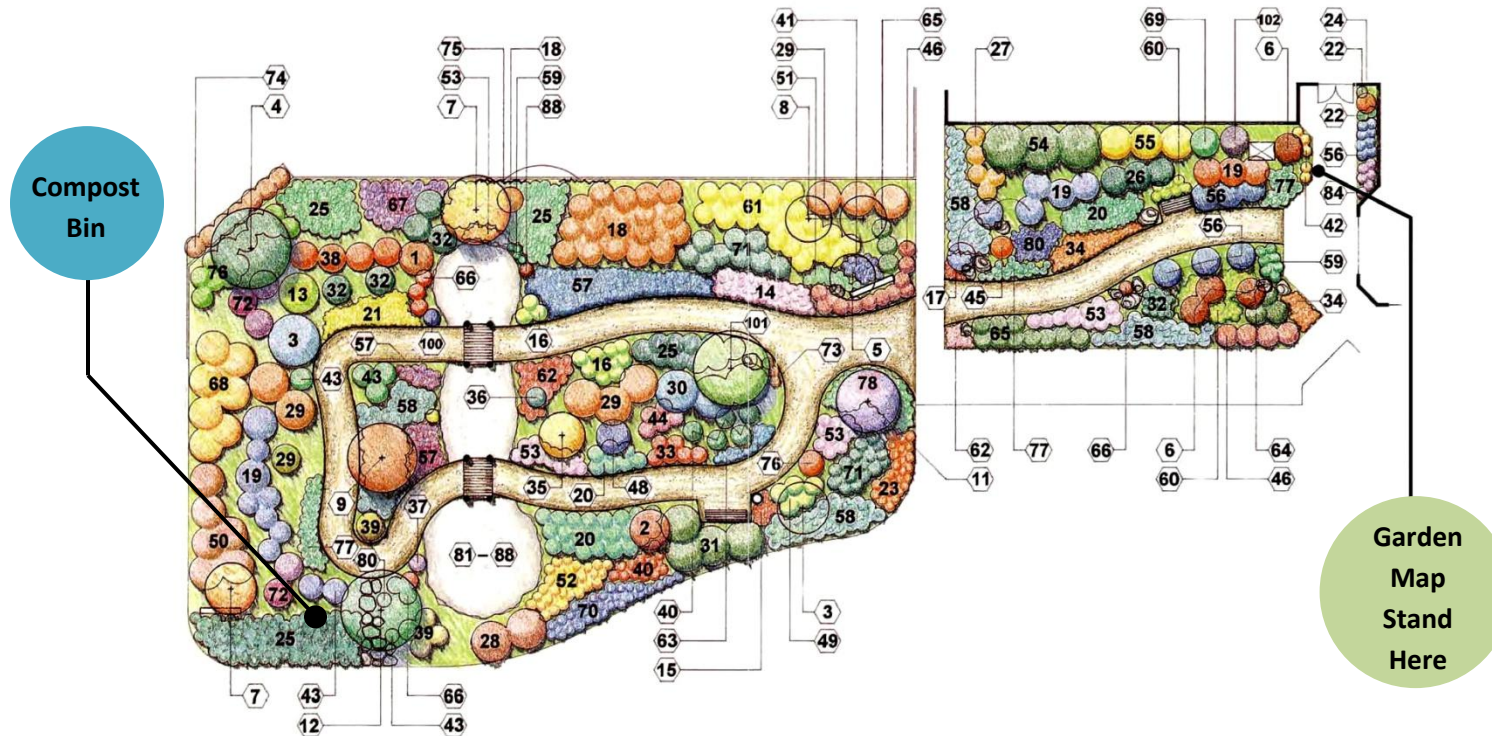


ACWD Drought Tolerant Garden

Welcome to ACWD's Drought Tolerant Demonstration Garden! This Demonstration Garden was designed as a showplace for color and texture as well as for drought tolerance. We hope that this garden and guide will help you to choose water conserving plants for your own landscape. Well-designed water efficient landscapes are affordable, easy to maintain and provide long-term benefits to you and the environment. In addition to conserving water these landscapes often require less maintenance and fewer chemicals. In 2011 a composting demonstration was added to the garden. Green waste from the employee lunchroom is collected, composted and used on-site. This map shows the placement of plants in the garden. The numbers on the map correspond to the plants listed on the back page of this guide.



*Garden design by Nancy Hardesty ASLA, of Hardesty Benoit Associates. Irrigation system design by John Blevens, of Irrigation System Consultants.



Please note: People with sensitive skin and/or prone to skin allergies should take care when touching or entering any area with plants, including those in our demonstration garden.

Drought Tolerant Plant Traits

As you study the plants in the Drought Tolerant Garden, note the drought resistant traits each plant possesses. The plants growing in this garden include California natives as well as Mediterranean and Australian exotics, all of which are successful drought resistant citizens in San Francisco Bay Area low water-use gardens.

- Early blooming and seed setting cycle which occurs when plant roots are still getting water and therefore nutrition.
- Early leaf drop (in August) to minimize plant photosynthesis in dry, hot months.
- Underground bulb or enlarged root which provides nutrition during the dry months
- Gray or white leaves which reflect heat.
- White or light gray stems or bark which reflect heat.
- Thick leaves which minimize water loss.
- Wax-coated leaves which minimize water loss.
- Narrow and/or curled leaves which minimize exposure to heat and water loss.

TREES

	BOTANICAL NAME	COMMON NAME
1	Aesculus californica	California Buckeye
2	Arbutus menziesii	Madrone
3	Cercis occidentalis	Western Redbud
4	Eucalyptus sideroxylon	Eucalyptus
5	Lagerstroemia f.	Crape Myrtle
6	Leptospermum laeuigatum	Australian Tea Tree
7	Pistacia chinensis	Chinese Pistache
8	Prunus ilicifolia	Holly Leaf Cherry
9	Rhus lancea	African Sumac
10	Robinia ambigua	Idaho Locust
11	Sambucus caerulea	Blue Elderberry
12	Schinus molle	California Pepper
101	Quercus agrifolia	Coast Live Oak

SHRUBS

	BOTANICAL NAME	COMMON NAME
13	Acacia redolens	Prostrate Acacia
14	Achillea "Apple Blossom"	Yarrow
15	Achillea "Salmon Beauty"	Yarrow
16	Agapanthus africanus	Lily of the Nile
17	Cotoneaster dammeri	Bearberry Cotoneaster
18	Arbutus unedo 'Compacta'	Strawberry Tree
19	Arctostaphylos densiflora	Manzanita
20	Arctostaphylos uva-ursi	Manzanita Bearberry
21	Armeria maritima	Sea Thrift
22	Aspidistra elatior	Cast Iron Plant
23	Aster frikartii	Aster
24	Aucuba japonica	Japanese Aucuba
25	Baccharis pilularis	Dwarf Coyote Bush
26	Berberis thunbergii	Japanese Barberry
27	Carpenteria californica	Bush Anemone

	BOTANICAL NAME	COMMON NAME
28	Ceanothus "Blue Jeans"	Wild Lillac
29	Ceanothus "Yankee Point"	California Wild Lillac
30	Ceanothus "Anchor Bay"	California Wild Lillac
31	Ceanothus "Joyce Couler"	Wild Lillac
32	Ceanothus rigidus "Snowball"	Snowball Ceanothus
33	Cerastium tomentosum	Snow in Summer
34	Cerastostigmalumbagooides	Dwarf Plumbago
35	Cercocarpus betuloides	Mountain Mahogany
36	Chaenomeles "Toyo Nishiki"	Flowering Quince
37	Chaenomeles "Red"	Flowering Quince
38	Cistus purpureus	Purple Rockrose
39	Cistus salvifolius	Sageleaf Rockrose
40	Dietes vegeta	Fortnight Lily
41	Diplacus hybrids	Monkey Flower
42	Dryopteris erythrosora	Autumn Fern
43	Echium fastuosum	Pride of Madeira
44	Festuca californica	California Fescue
45	Epimedium grandiflorum	Bishops Hat
46	Eriogonum umbellatum	Sulfur Buckwheat
47	Eschscholzia californica	California Poppy
48	Fremontodendron	Flannel Bush
49	Galvezia speciosa	Island Bush Snapdragon
50	Grevillea noellii	Grevillea
51	Gaura lindheimeri	Gaura
52	Helictrichon sempervirens	Blue Oat Grass
53	Hemerocallis hybrids	Daylilies
54	Heteromeles arbutifolia	Toyon
55	Mahonia aquifolium	Oregon Grape
56	Mahonia repens	Creeping Mahonia
57	Myoporum parvifolium	Prostrate Myoporum
58	Nandina "Harbor Dwarf"	Dwarf Heavenly Bamboo
59	Nandina compacta "nana"	Dwarf Heavenly Bamboo

	BOTANICAL NAME	COMMON NAME
60	Nepeta faassenii	Cat Mint
61	Nerium oleander	Petite Salmon Oleander
62	Oenothera berlandieri	Mexican Evening Primrose
63	Oenothera missouriensis	Evening Primrose
64	Pennisetum cupreum	Fountain Grass
65	Phormium tenax "Tiny Tim"	Dwarf New Zealand Flax
66	Pinus mugo	Mugho Pine
67	Plumbago auriculata	Cape Plumbago
68	Rhamnus californica	Coffeeberry
69	Ribes speciosum	Fuchsia Flowering Gooseberry
70	Rosmarinus officinalis	Rosemary
71	Salvia leucantha	Mexican Sage
72	Salvia uliginosa	Sage
73	Scilla peruviana	Peruvian Scilla
74	Sedum telephium	Stone Crop
75	Solanum jasminoides	Potato Vine
76	Sollya heterophylla	Australian Blue Bell Creeper
77	Tulbaghia violacea Sliverlace	Society Garlic
78	Zauschneria californica	California Fuchsia
80	Cerastostigma willmottianum	Chinese Plumbago
100	Lupinus arboreus	Lupine
102	Ribes sanguineum	Pink Winter Current

CREEKSIDE PLANTING

	BOTANICAL NAME	COMMON NAME
81	Crococsmia hybrids	Montbretia
82	Iris "Douglasianna "	Pacific Coast Iris
83	Juniperus horizontalis	Prince of Wales Juniper
84	Limonium perezii	Sea Lavender
86	Thymus vulgaris	Thyme
87	Watsonia pyramidata	Watsonia
88	Zephyranthus candida	Zephyr Flower

For more information contact: Alameda County Water District
43885 S. Grimmer Blvd.
Fremont, CA 94538
www.acwd.org
(510) 668-6534