



43885 South Grimmer Boulevard, Fremont, California 94538-6348 * (510) 668-4200 * FAX (510) 249-9483 * www.acwd.org

REQUEST FOR QUOTATION*

Bidder please apply label with Company Name, Contact Name, & Address here.

Page 1 of 3

Quotation No.: 2984

Date: March 5, 2009

Quotation must be made on this form and returned under sealed cover in the enclosed envelope. Quotation must be received at the Alameda County Water District (District) office, 43885 So. Grimmer Blvd., Fremont, CA 94538 **by 2:00 PM on 3-24-2009** and at that time the quotations will be publicly opened and read. Late quotations will not be accepted. **FAX QUOTATION IS NOT ACCEPTABLE.**

Gerald D. Bretag, C.P.M., Purchasing Officer

ITEM	QTY.	UNIT	DESCRIPTION		AMOUNT
1.	1	Each	You are invited to submit a quotation for the following according to attached District Vehicle Specifications: New current year model(2009) Ford F-250 Super Duty XL with Service Body California Tire Fee		\$ _____
				Sales Tax 9.75%:	\$ _____
					\$ _____
				Total:	\$ _____
					\$ _____
2.	1	Each	New current year model(2009) Ford F-250 Super Cab, Super Duty XL with service body California Tire Fee		\$ _____
				Sales Tax 9.75%:	\$ _____
					\$ _____
				Total:	\$ _____
					\$ _____
(Continued on Page 2)					

The District's payment terms are Net 30. Cash discounts will not be considered in the evaluation of this Request for Quotation. However, if you have an interest in including cash payment terms in order to possibly obtain early payment, please indicate your cash payment terms here _____ % _____ days.

Delivery Time: _____ Calendar Days

Quotation Good For: _____ Calendar Days

PRICES ARE F.O.B. DESTINATION AND ARE TO INCLUDE DELIVERY TO ACWD HEADQUARTERS.

The undersigned agrees to furnish the items described in this Request for Quotation (2 pages) at the stated prices and terms, and in accordance with the attached ACWD Vehicle Specifications.

(Authorized Signature)

(Title)

(Print or Type Name)

(Federal Taxpayer ID No.)

(Date)

(Telephone Number)

***THIS IS NOT AN ORDER**

REQUEST FOR QUOTATION*

Page 2 of 3

Quotation No.: 2984

Date: March 5, 2009

ITEM	QTY.	UNIT	DESCRIPTION		AMOUNT
3.	1	each	New current year model(2009) Ford F-250 4x4 Super Cab, Super Duty with Valve Turner		\$ _____
				Sales Tax	\$ _____
				9.75%:	\$ _____
			California Tire Fee		\$ _____
				Total:	\$ _____
4.	1	each	New current year model(2009) Ford Fusion Hybrid		\$ _____
				Sales Tax	\$ _____
				9.75%:	\$ _____
			California Tire Fee		\$ _____
				Total:	\$ _____
			ACWD is exempt from license fees.		
			Note new sales tax rate.		

Please indicate year and model you are bidding, item 1: _____.

Please indicate year and model you are bidding, item 2: _____.

Please indicate year and model you are bidding, item 3: _____.

Please indicate year and model you are bidding, item 4: _____.

Check here if there are any deviations from ACWD Vehicle Specifications, please list on Specification sheet.

District's Purchase Order and Request for Quotation (RFQ) will serve as the contract documents. Additional contracts or agreements prepared by the Vendor will not be accepted by District.

Please be sure you complete all quotation requirements and enclose all requested items when you submit your quotation.

Please go to www.acwd.org to register in our supplier registration data base. At the ACWD page, click on Doing Business With Us. Click on ACWD Purchasing Division. Click on Supplier Registration. Future bid announcements will be sent via email to those suppliers who have registered with us.

Bid results for this RFQ will be available on our website after the bid opening.

If you have any questions relating to the RFQ, please contact Mark Lott at (510) 668-6550.

Alameda County Water District
Vehicle Specifications
 Ford F-250 Super Duty XL with Service Body

GENERAL DESCRIPTION	New current year model (2009) Ford F-250 super duty 2WD full size regular cab truck, 137" XL with service body
GROSS VEHICLE WEIGHT	Minimum 8,800 lbs.
WHEEL BASE	142"
ENGINE	5.4L SOHC 24 Valve EFI Triton V8 Power
ALTERNATOR	12 volt, 157 amp
BATTERY	72 ampere 650cca
AIR CONDITIONING	Factory installed CFC free
TRANSMISSION	5 speed automatic with overdrive (44T), 4.10 Axle Ratio with limited slip
SUSPENSION	Heavy service package (63R)
RADIATOR	Heavy duty, super engine cooling
TIRES AND WHEELS	5- LT 245/75R-17E All-Season BSW Tires
ACCESSORIES	All standard equipment, Class V trailer hitch receiver: 2" hitch, trailer tow package, right and left outside trailer tow oversized foldaway rearview power operated mirrors, four (4) sets of keys, tools to include jack and wheel wrench, power door locks and windows (90L), AM/FM stereo w/clock, 40/20/40 split vinyl bench, Tilt steering wheel, Manual to include: 1 each of operators and technical manual to be provided at time of delivery.
COLOR	Oxford white with clear coat, interior to be gray Z1/35
LEGAL & DMV	Equipment and accessories shall conform to provisions of California Vehicle Code and all Federal Regulations. Note: ALL DMV LICENSING TO BE HANDLED BY DEALER (CALIFORNIA EXEMPT PLATES)

ALAMEDA COUNTY WATER DISTRICT
 SPECIFICATIONS FOR UTILITY BODY

<p>GENERAL DESCRIPTION</p>	<p>These specifications describe the minimum requirements for a new utility body to be installed on a new Ford F-250 XL Super duty regular cab (56" C.A.). The unit shall be a new unused service body similar to Scelzi Enterprises, Inc. # SB-98-79-49-33 VO; 98 inch long, vertical door arrangement and open top model or equal in material, function and construction. Also a roof rack as described in the attached drawing.</p>
<p>BODY</p>	<ul style="list-style-type: none"> • The utility body is to be made of galvanized steel with a minimum 5 year warranty against rust. • The street side front compartment shall be equipped with 6 drawers approximate size, 24" w x 12" d x 4" h. Drawers to have a capacity of 250 lbs. each. All drawers to be equipped with adjustable and removable dividers. • The street side rear vertical compartment shall be equipped with one (1) adjustable shelf. • The curb side shall be equipped as shown in the attached drawing Section A. The intent is to allow for the storage of tools with long handles through the opening in the back of the curb side. • The curb side horizontal compartment will also access the long (78") compartment. • The curb side front vertical compartment shall be equipped with (1) one fixed shelf fitted with a 2000 Watt continuous output isolator (inverter). • All compartment doors shall be equipped with barrel locks. • T-Bar handle latches with stainless steel pockets and Galvanized steel locking rods. Three point latching system on all compartment doors. • Seal-beam type clearance and stoplights. • 18" Work deck with 12" box and upper 5" thru-body box. • Open tops – open tops lids of 16 gauge galvanized metal with smooth tops, "Z" style hat section using 18 gauge inner panel, with aluminum diamond plate overlay • Rack is 2"x3" Standard rack, with four Rack Strap square mount tie-downs appropriately attached per the manufacturer recommendations. Also one "J" hook on each post. • Igloo cooler support frame per Section D of attached drawing.

**Alameda County Water District
Vehicle Specifications**

Ford F-250 Super Cab Super Duty XL with Service Body

GENERAL DESCRIPTION	New current year model Ford F-250 super duty 2WD super cab truck (with four doors), 158" XL with service body
GROSS VEHICLE WEIGHT	Minimum 9,000 lbs.
WHEEL BASE	158" ; C.A. – 56"
ENGINE	5.4L SOHC 24 Valve EFI Triton V8 Power
ALTERNATOR	12 volt, 157 amp
BATTERY	72 ampere 650cca
AIR CONDITIONING	Factory installed CFC free
TRANSMISSION	5 speed automatic with overdrive (44T), 4.10 Axle Ratio with limited slip
SUSPENSION	Heavy service package (63R)
RADIATOR	Heavy duty, super engine cooling
TIRES AND WHEELS	5- LT 245/75R-17E All-Season BSW Tires
ACCESSORIES	All standard equipment, Class V trailer hitch receiver: 2" hitch, trailer tow package, right and left outside trailer tow oversized foldaway rearview power operated mirrors, four (4) sets of keys, tools to include jack and wheel wrench, power door locks and windows (90L), AM/FM stereo w/clock, 40/20/40 split vinyl bench, Tilt steering wheel (524), Manual to include: 1 each of operators and technical manual to be provided at time of delivery.
COLOR	Oxford white with clear coat, interior to be gray Z1/35
LEGAL & DMV	Equipment and accessories shall conform to provisions of California Vehicle Code and all Federal Regulations. Note: ALL DMV LICENSING TO BE HANDLED BY DEALER (CALIFORNIA EXEMPT PLATES)

ALAMEDA COUNTY WATER DISTRICT
 SPECIFICATIONS FOR SERVICE BODY

<p>GENERAL DESCRIPTION</p>	<p>These specifications describe the minimum requirements for a new utility body to be installed on a new Ford F-250 XL Super duty with a super cab (56" C.A.) The unit shall be a new unused service body similar to Scelzi Enterprises, Inc. # SB-98-79-49-33 V; 98 inch long, vertical door arrangement and close top model or equal in material, function and construction. Any variation must be clearly identified. The body is to be primed and painted to match the cab.</p>
<p>BODY</p>	<ul style="list-style-type: none"> • Constructed of 14 gauge galvaneal steel. The overall dimensions are depicted in the attached drawing. • Curb side front vertical panel to have a full size through compartment to the back of the street side vertical compartment. The bottom of the vertical compartment that goes below floor level (tall section) to be made of expanded metal (Detail A). • Curb side rear vertical compartment to have one adjustable shelf. • Street side front vertical compartment to have two adjustable shelves set at equal distance. The compartment bottom is to be solid diamond plate metal similar to the bed of the body. • A vice grip rack holder to be attached to the rear on the curb side. • The flashers to be LED strobe type similar to ECCO 9400 Series. • Wheelen Traffic Advisor LINZ6 – TAZ86 mounted inside the cab in the back window. • The rear bumper to be a six-inch step bumper. Powder coated grey. • Seal-beam type clearance and stoplights. • All compartments are to be properly sealed from water intrusion. • Three point latching systems on all compartment doors with barrel type locks and paddle style handles. • All wiring harnesses are to be tested and installed in loop clamps to secure mounting.
<p>COLOR</p>	<p>The utility box shall be primed and painted the same color as the cab and chassis (Ford White Clearcoat)</p>
<p>LIGHTING</p>	<p>All vehicle lighting shall be rubber mounted, sealed truck LED=s. Mount stop, tail, marker, backup and directional turn signals in the upper part of the rear body panel. All compartment lighting to have Vista Company tube lights.</p>

Alameda County Water District
Vehicle Specifications
 Ford F-250 4x4 Super Duty with Super Cab

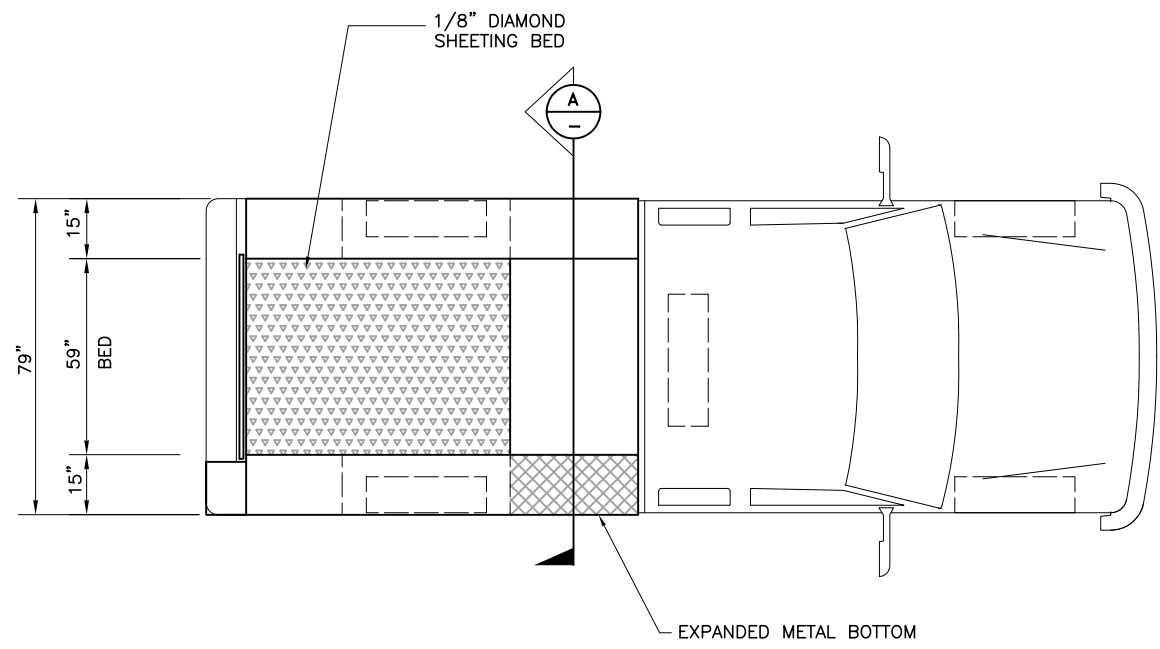
GENERAL DESCRIPTION	New Ford F-250 4x4 super duty with super cab, full size truck (600A). The truck is to be equipped with a Pacific Tek #PT-25 ("GATOR") valve turner. Install in bed of truck (see installation below).
GROSS VEHICLE WEIGHT	Minimum 9000 lbs.
WHEEL BASE	158' with 8' box
ENGINE	6.4L DI V8 Turbo-Diesel "Power Stroke" w/ engine block heater
ALTERNATOR	12 volt, 200 amp (67D)
BATTERY	78 ampere 750cca (Dual)
AIR CONDITIONING	Factory installed CFC free
TRANSMISSION & AXLE	5 speed automatic with overdrive, including auxiliary transmission oil cooler, 4.10 axle ratio with limited slip rear axle, also, transmission power take-off provision
RADIATOR	Heavy duty, super engine cooling
TIRES AND WHEELS	4- LT 245/75R-17E BSW All Terrain steel belted radials, black wall
ACCESSORIES	All standard equipment, right and left outside trailer tow oversized foldaway rearview power operated mirrors, hour meter, Camper Package, four (4) sets of keys, tools to include jack and wheel wrench, power door locks and windows, AM/FM stereo w/clock, standard 40/20/40 split bench vinyl seat, Manual to include: 1 each of operators and technical manual to be provided at time of delivery.
COLOR	Oxford white with clear coat, interior to be gray Z1/35

Valve Turner Installation

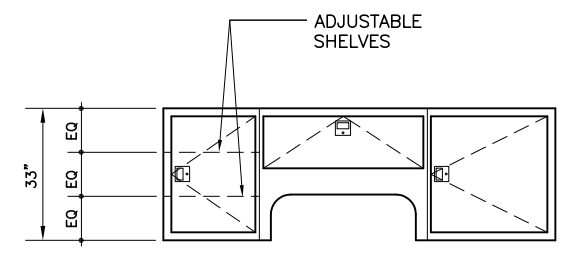
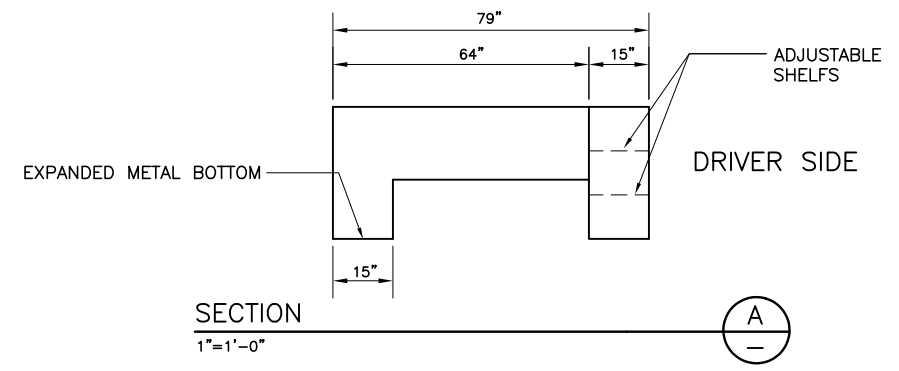
<p>Installation</p>	<p>GENERAL DESCRIPTION:</p> <p>Modifications to a standard 8’ bed (on a Ford F-250). Cut out section on driver’s side of bed to accommodate a valve operator machine. Cut-out would be 5” above floor line.</p> <p>DETAIL INSTALLATION:</p> <ul style="list-style-type: none"> • Fuel spout would be re-located to area under forward section of cut-out body work. (toward cab) • Provide and install Pacific Tek model #PT-25 “GATOR” and all factory attachments • Provide and install hydraulic pump, 15 GPM max, mounted directly to the PTO, furnish and install hot shift PTO driven from transmission with all hoses to Pacific Tek machine • Install PTO controls outside cab • Re-paint bed white • Furnish and install Weatherguard side box #175-3 on passenger side of bed • Furnish and install Weather guard side box #185-3 on driver side • Furnish and install rack for mounting lighting behind cab, rack shall be contoured to back of cab and painted to match cab • Furnish and install (2) Whelen “Micro” Freedom LED linear lightheads, mounted on each side of traffic advisor 3-3/4” H x 10” D x 18” W • Furnish and install inverted cone holder on front bumper
<p>LEGAL & DMV</p>	<p>Equipment and accessories shall conform to provisions of California Vehicle Code and all Federal Regulations. Note: ALL DMV LICENSING TO BE HANDLED BY DEALER (CALIFORNIA EXEMPT PLATES)</p>

**Alameda County Water District
Vehicle Specifications
Ford Fusion Hybrid**

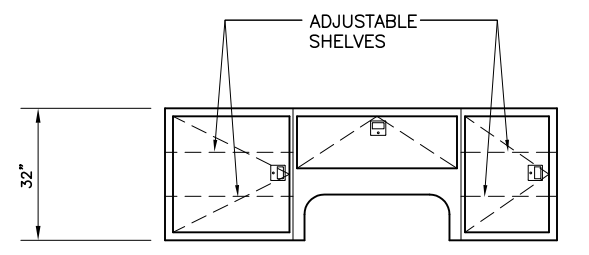
GENERAL DESCRIPTION	New current year (2010) model Ford Fusion Hybrid front- wheel drive, 4 door sedan
ENGINE	2.5L I4 Atkinson Hybrid Engine
TRANSMISSION	Asian powersplit E-CVT automatic transmission
AIR CONDITIONING	Factory installed standard air conditioning
TIRES AND WHEELS	P225/50VR17 all season tires
BRAKES	4-wheel anti-lock disc brakes
ADDITIONAL SPECIFICATIONS	All standard equipment – dealer to provide a specification of what is included, must include tilt steering wheel with cruise control, power windows, rear window defroster, AM/FM stereo, SAFETY PACKAGE,
COLOR	White Suede
LEGAL & DMV	Equipment and accessories shall conform to provision of California Vehicle Code and all Federal Regulations. Note: ALL DMV licensing to be handled by dealer (California Exempt plates)



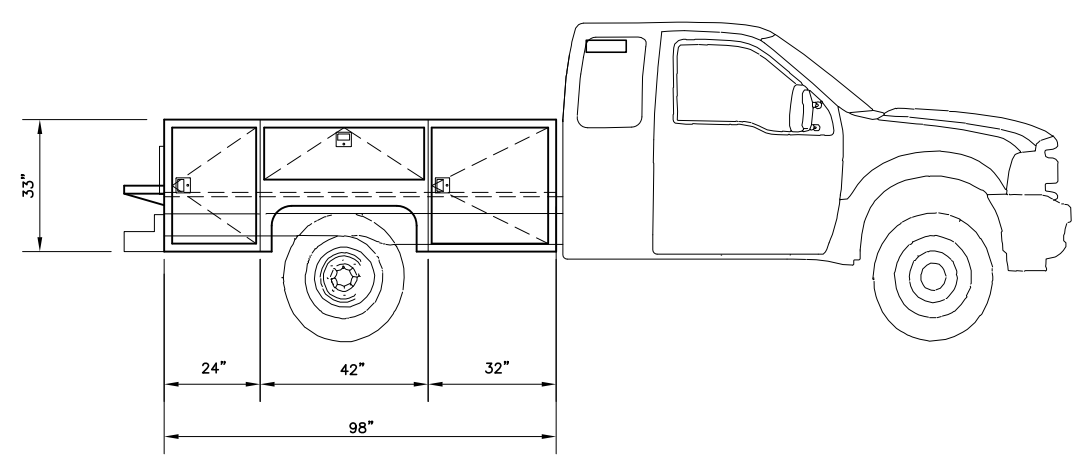
TOP VIEW
1/2"=1'-0"



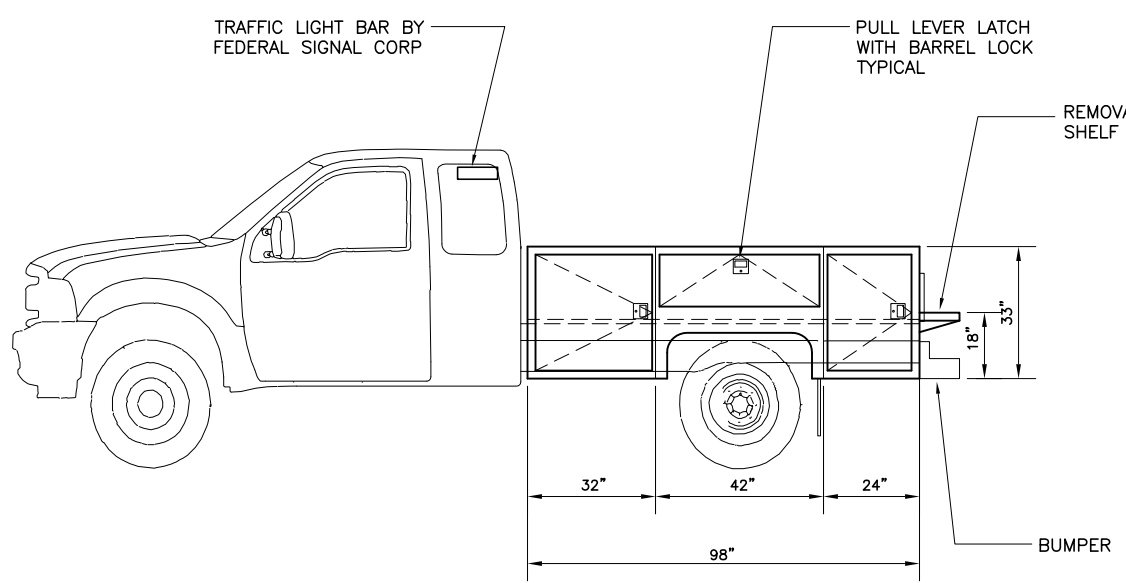
PASSENGER SIDE DETAIL
1"=1'-0"



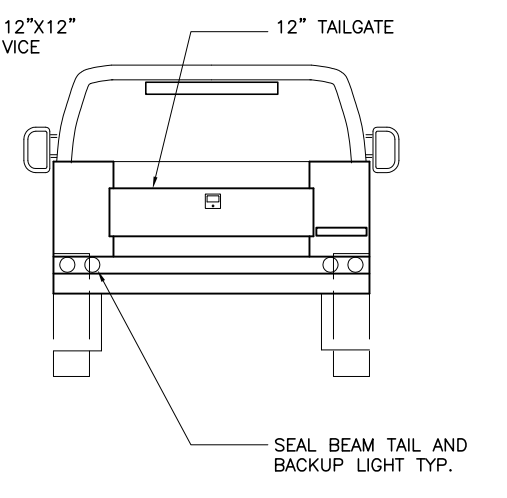
DRIVER SIDE DETAIL
1"=1'-0"



PASSENGER SIDE VIEW
1/2"=1'-0"



DRIVER SIDE VIEW
1/2"=1'-0"



BACK VIEW
1/2"=1'-0"

DESIGNED	
DRAWN	
CHECKED	
REVIEWED BY OPS	
PROJ ENGR	
ENGR SUPERVISOR	

XXX	XXX	XXX
BY	APP	APP

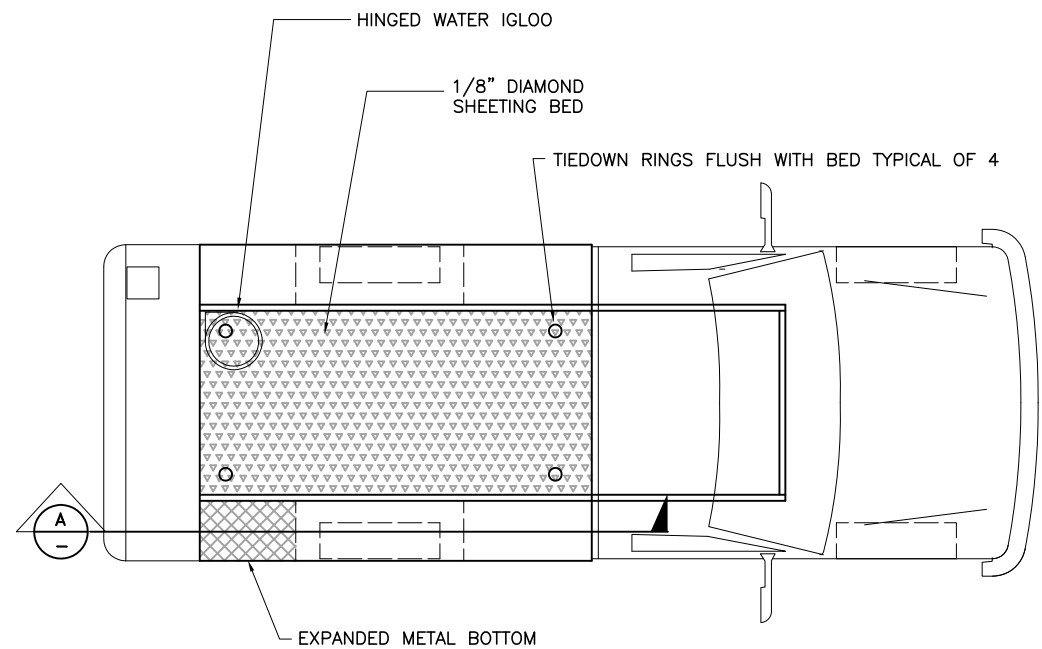
ACWD
ALAMEDA COUNTY WATER DISTRICT

ALAMEDA COUNTY WATER DISTRICT
43885 SOUTH GRIMMER BOULEVARD
P.O. BOX 5110
FREMONT, CA 94537-5110
(510) 668-4200

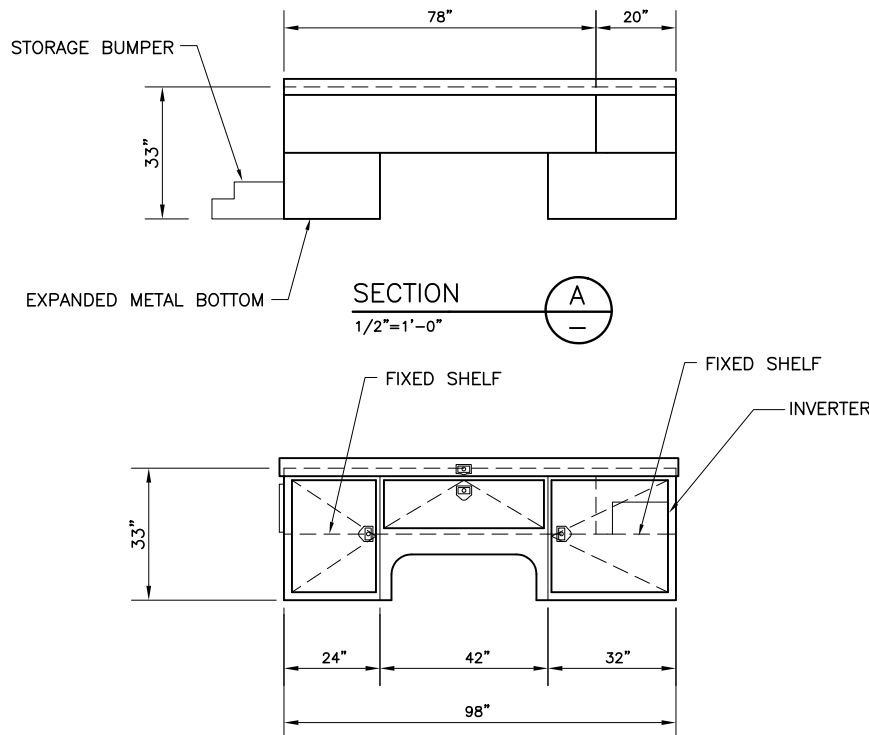
OPERATIONS DEPARTMENT
VEHICLE SPECIFICATIONS

PROJECT NO XXXXXX	FILE: TRUCK-01A.DWG
JOB NO 3102	DATE: JAN 2009
DWG NO TRUCK-01A	SCALE: AS NOTED
REV A	

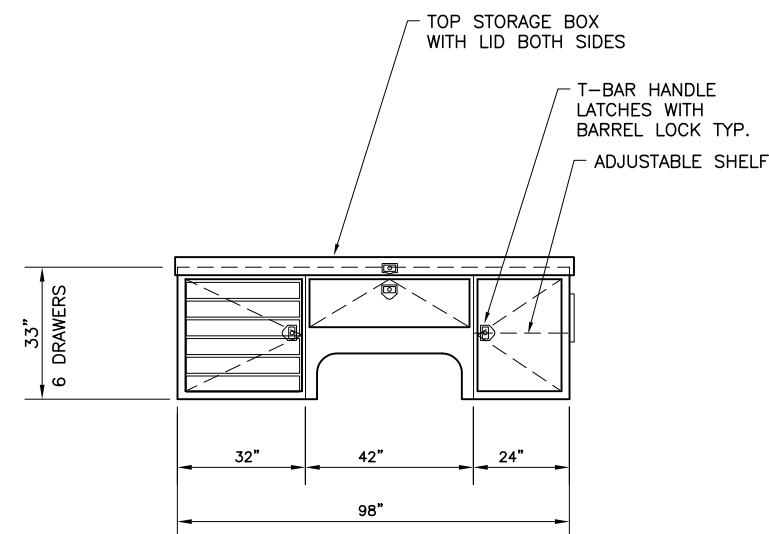
SHEET NO
01A



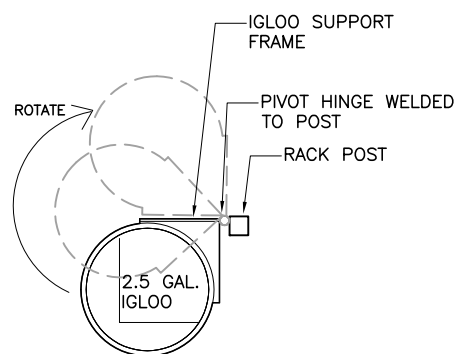
TOP VIEW
1/2"=1'-0" 1



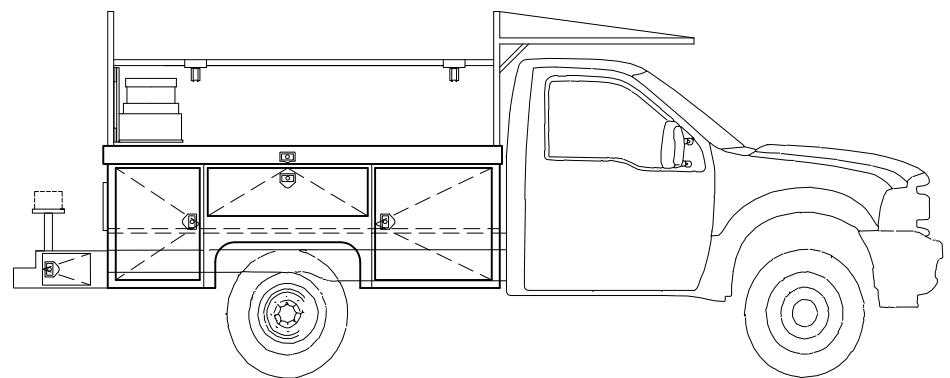
PASSENGER SIDE H BOX DETAIL
1"=1'-0" B



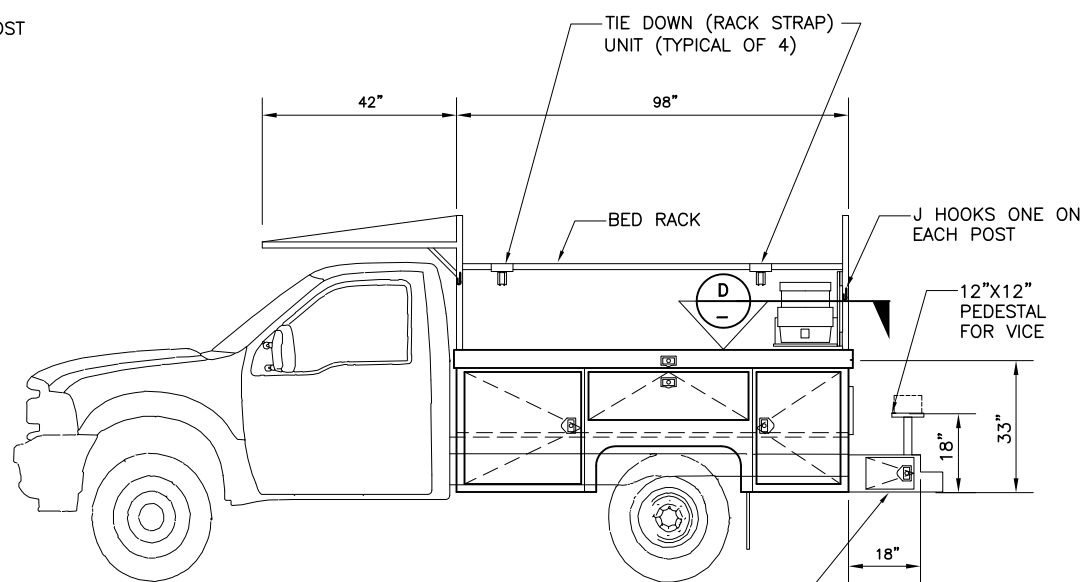
DRIVER SIDE H BOX DETAIL
1"=1'-0" C



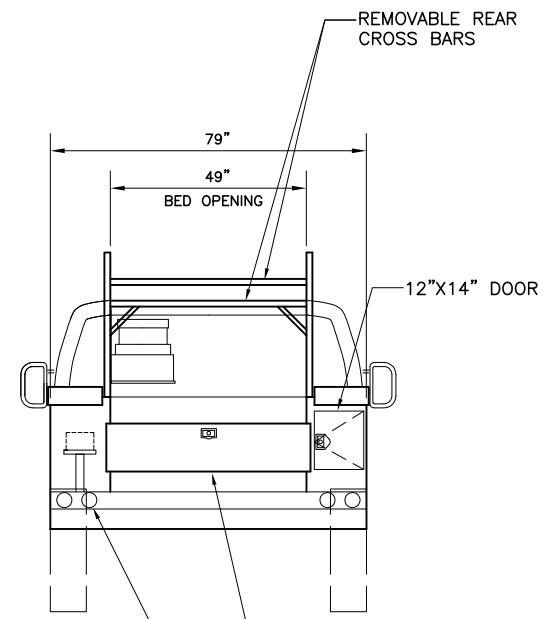
SECTION D
NO SCALE D



PASSENGER SIDE VIEW
1/2"=1'-0" 2



DRIVER SIDE VIEW
1/2"=1'-0" 3



BACK VIEW
1/2"=1'-0" 4

DOCK BUMPER WITH 18" WORKDECK AND 12" STORAGE BOX AND 5' THRU BODY BOX WITH SIDE DOORS (8"x12") BOTH SIDES

DESIGNED				
DRAWN				
CHECKED				
REVIEWED BY OPS				
PROJ ENGR				
ENGR SUPERVISOR				
A	XX/XX/XX	ISSUED FOR BID	XXX	XXX
NO	DATE	REVISION	BY	APP

ACWD
ALAMEDA COUNTY WATER DISTRICT
43885 SOUTH GRIMMER BOULEVARD
P.O. BOX 5110
FREMONT, CA 94537-5110
(510) 668-4200

OPERATION DEPARTMENT
VEHICLE SPECIFICATIONS

PROJECT NO XXXXXX	FILE: TRUCK-01B.DWG DATE: MARCH 2005 SCALE: AS NOTED	SHEET NO 01B
JOB NO 3102	DWG NO TRUCK-01B	REV A